

STOP LEVEL RELATIONSHIPS FOR RODGERS MODELS 770 and 780

The graph shows the fundamental relationships of voice levels between 8' voices played on the manuals at Middle "C" (note 25) and at the same note, Middle "C" (note 13) on the Pedals. This does not indicate chorus relationships.

GREAT

PRINCIPAL

FLUTE

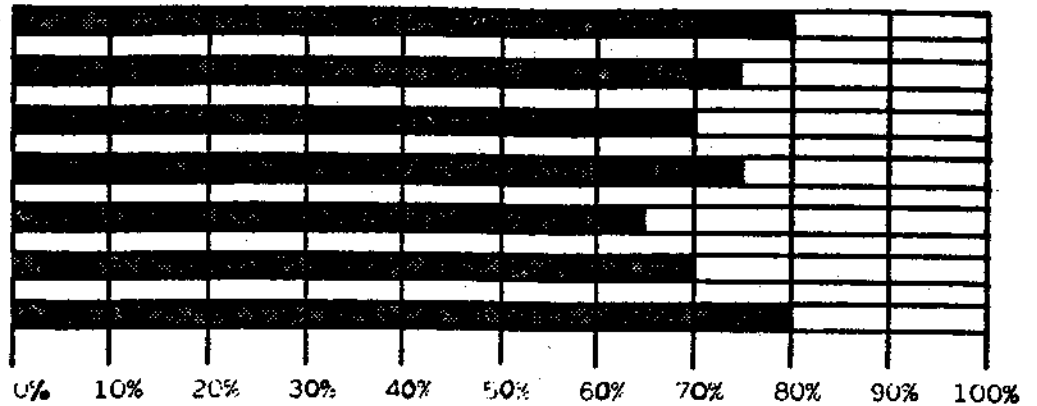
FLUTE CELESTE

KRUMMHORN 770

CLARINET 780

HARP

CARILLON



SWELL

PRINCIPAL

GEDACKT 770

TIBIA CLAUSA 780

GAMBA

VIOLA CELESTE II

FESTIVAL TROMPETTE 770

POST HORN 780

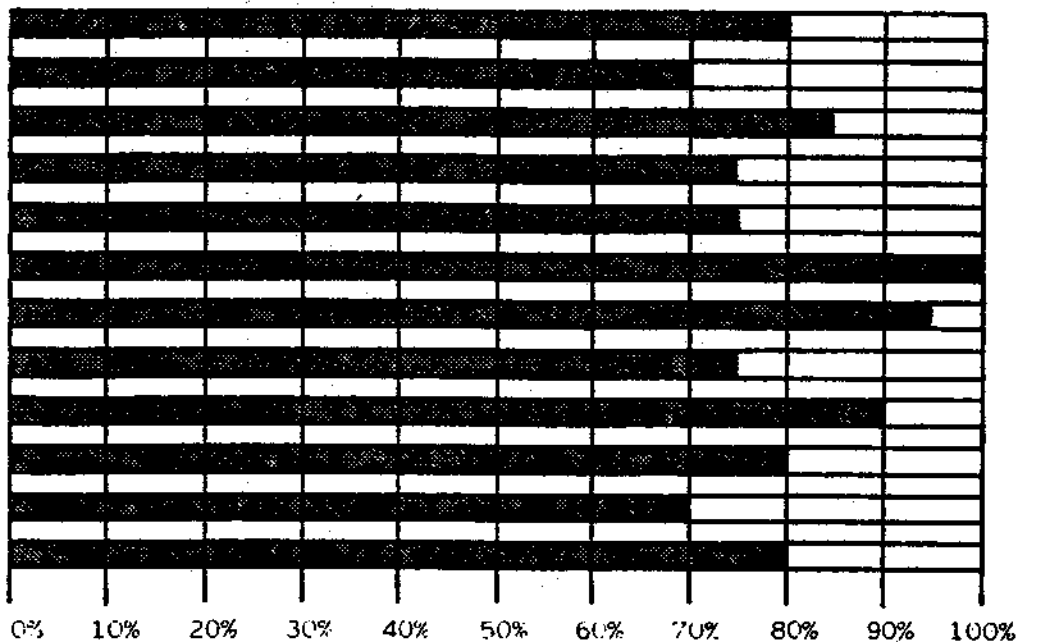
OBOE

TROMPETTE 770

HARMONIC TRUMPET 780

VOX HUMANA 770

VOX HUMANA 780



PEDAL

32' C. BOURDON

16' PRINCIPAL

16' SUBBASS 770

16' TIBIA CLAUSA 780

