

ALLEN ORGAN COMPANY

SERVICE BULLETIN FOR THE ALLEN MODEL THEATRE DELUXE

The following wiring diagram and instructions are for use by
factory authorized service representatives only.

IR865

MANUALS:

Solo and Accompaniment with 61 notes each-overhang.

PEDALBOARD:

32 notes radiating and concave.

EXPRESSION:

1 Expression Pedal controlling entire organ.

FEATURES:

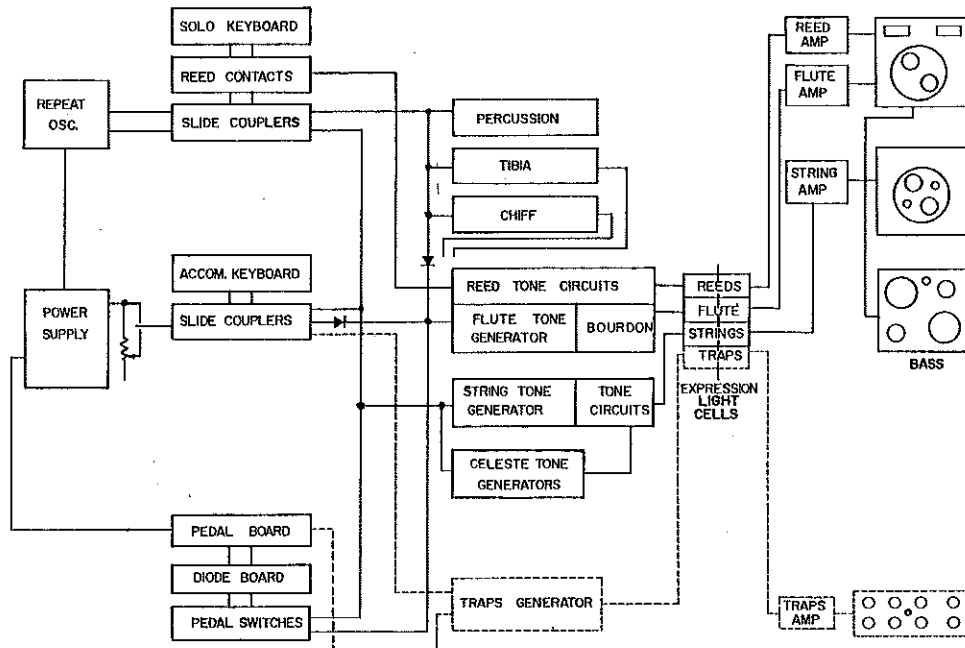
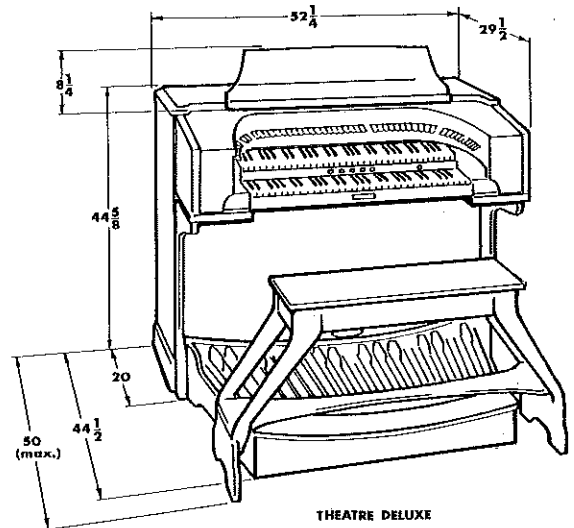
Horseshoe style console containing three sets of tone generators—two external Gyrophonic Projectors and one external pedal cabinet.

POWER REQUIREMENTS:

425 Watt maximum 115 volts—60 cycles.

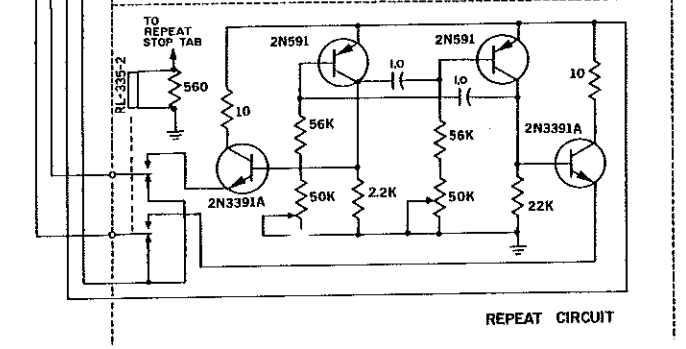
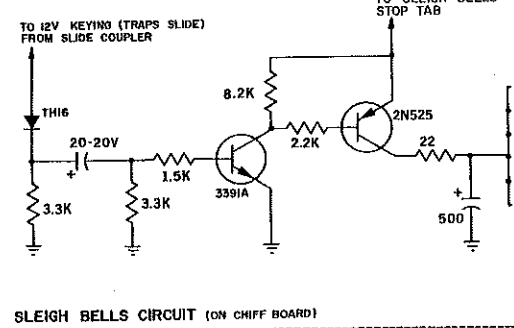
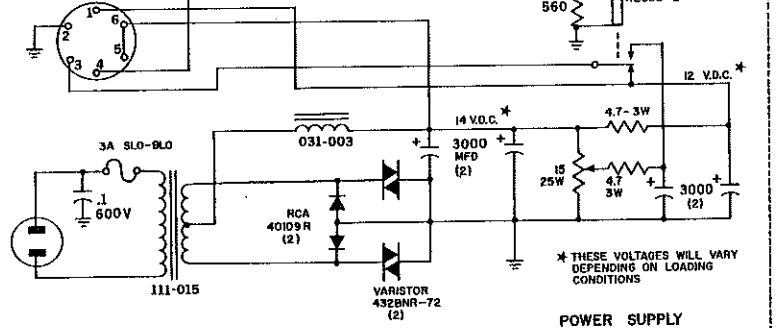
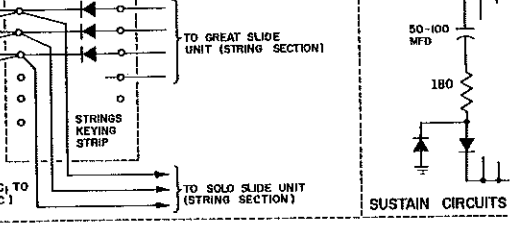
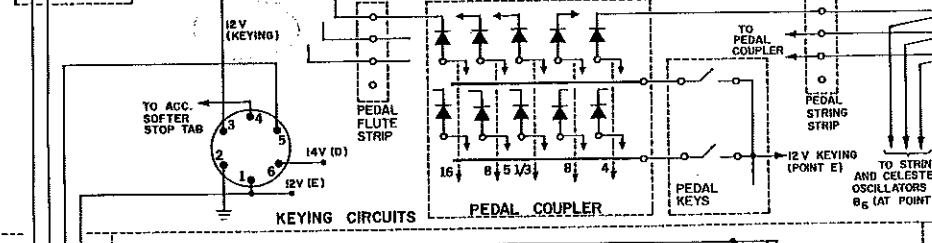
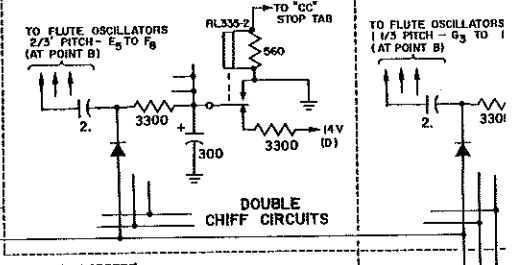
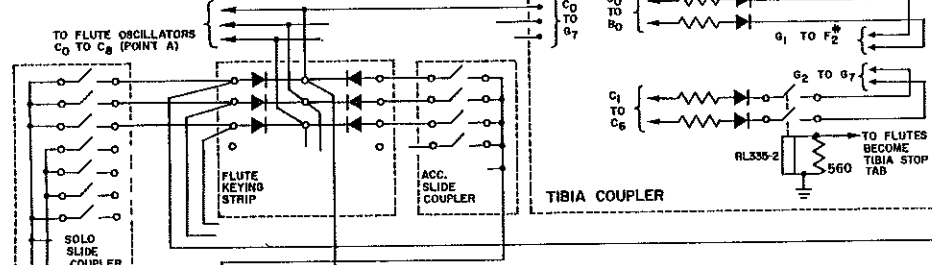
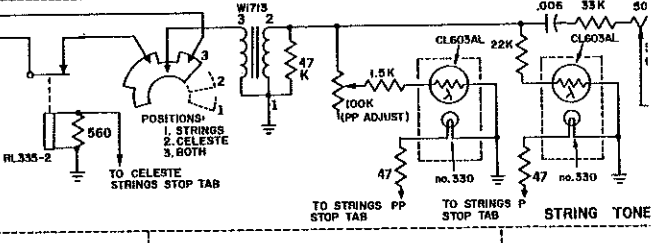
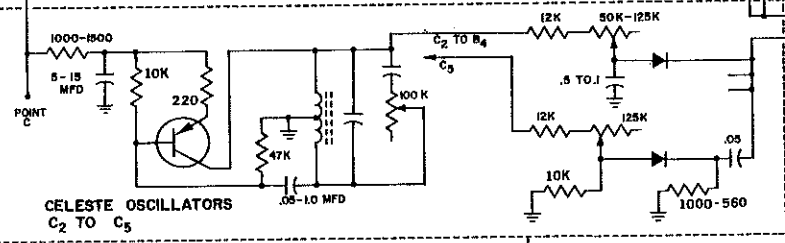
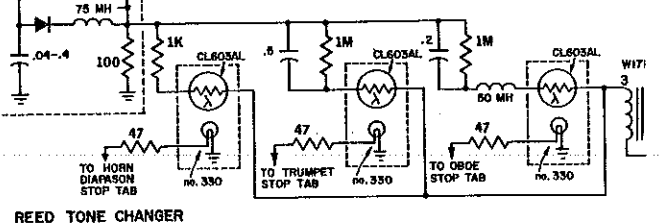
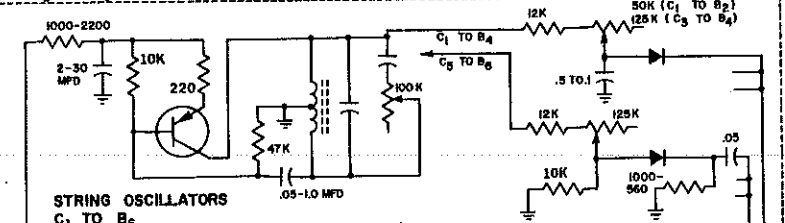
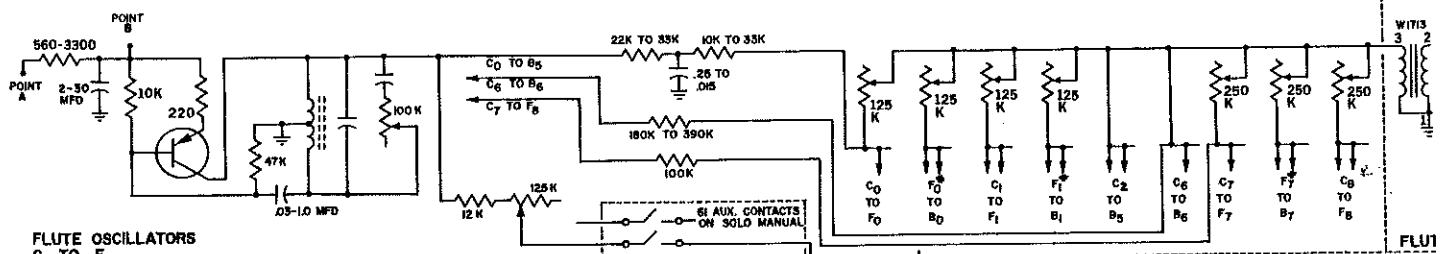
WEIGHT UNCRATED:

Console	395 lbs.	325 Flute-Reed	128 lbs.
Pedalboard	60 lbs.	310 String	105 lbs.
Bench	25 lbs.	305 Pedal	65 lbs.



Block Diagram

KEEP THIS BOOKLET. IT CONTAINS VALUABLE INFORMATION

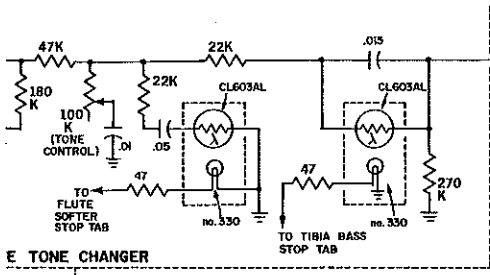


COMBINATION (SPNTHESIS) STOPS

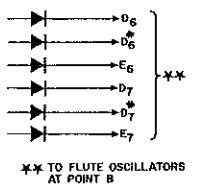
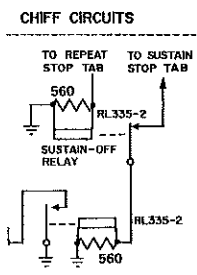
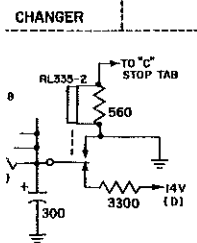
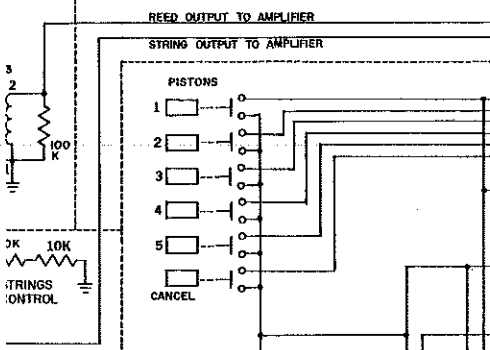
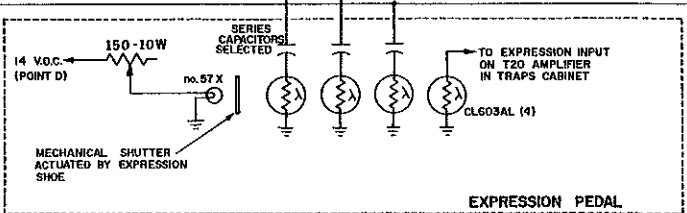
The following are achieved by automatically combining two or more stop pitches:

Stop Name	Combination
Clarinet	8, 2-2/3, 1-3/5
Marimba	8, Sustain, C
Music Box	2, 1, Sustain
Xylophone	8, 4, Repeat, C
Chrysoglott	16, 4, 1-3/5, Sustain, C
Carillon	Ch, 4, 2-2/3, 2, Ch, Sustain

The Theatre Deluxe is equ combination pistons and tw buttons. Indicator lights, on ton, are located on the right panel. Pistons 1, 2, and 3 provide s ately full ensemble. Piston 4 ming strings and organ. Pis a full theatrical ensemble. When any piston is in oper tablets of the organ are ek connected. Thus, a special c be set up on the stopbar are being used. This combir be brought into use the mocr el button is depressed.



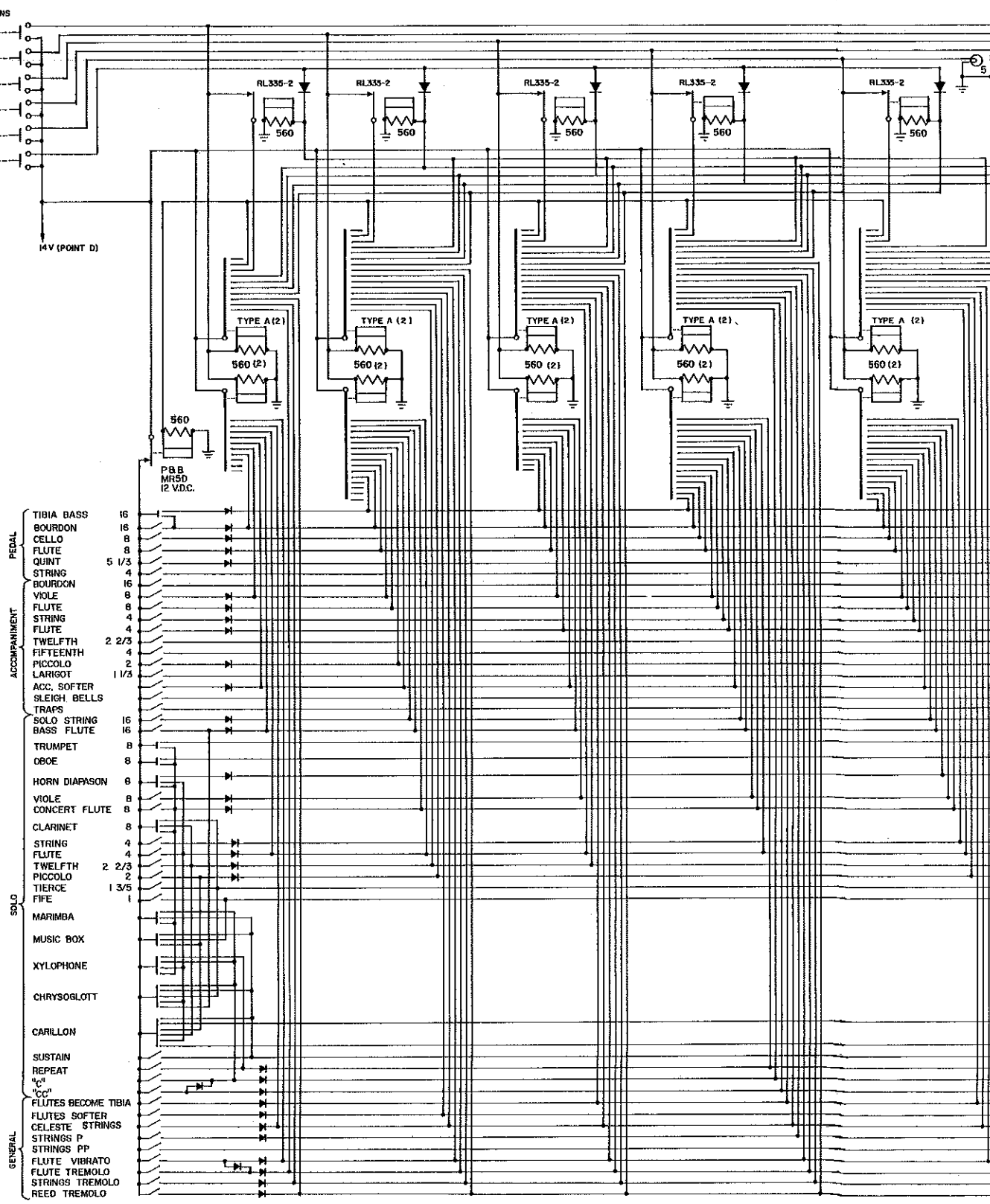
FLUTE OUTPUT TO AMPLIFIER

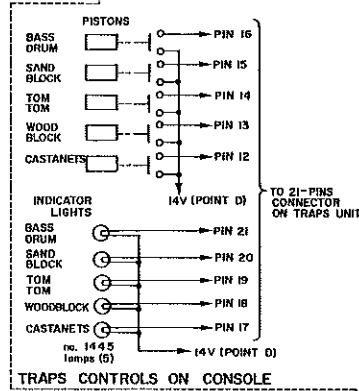
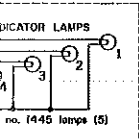
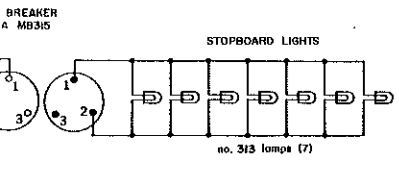


ipped with five
o piston cancel
e per each pis-
end of the stop

olo and moder-
provides strum-
ton 5 produces

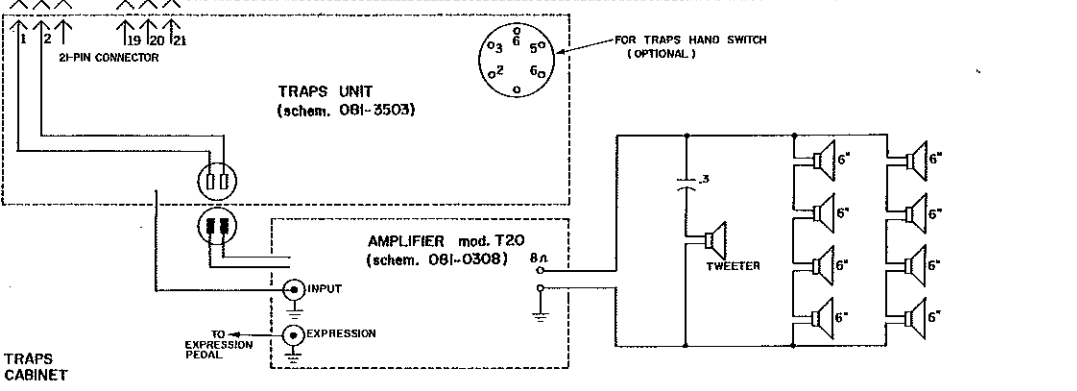
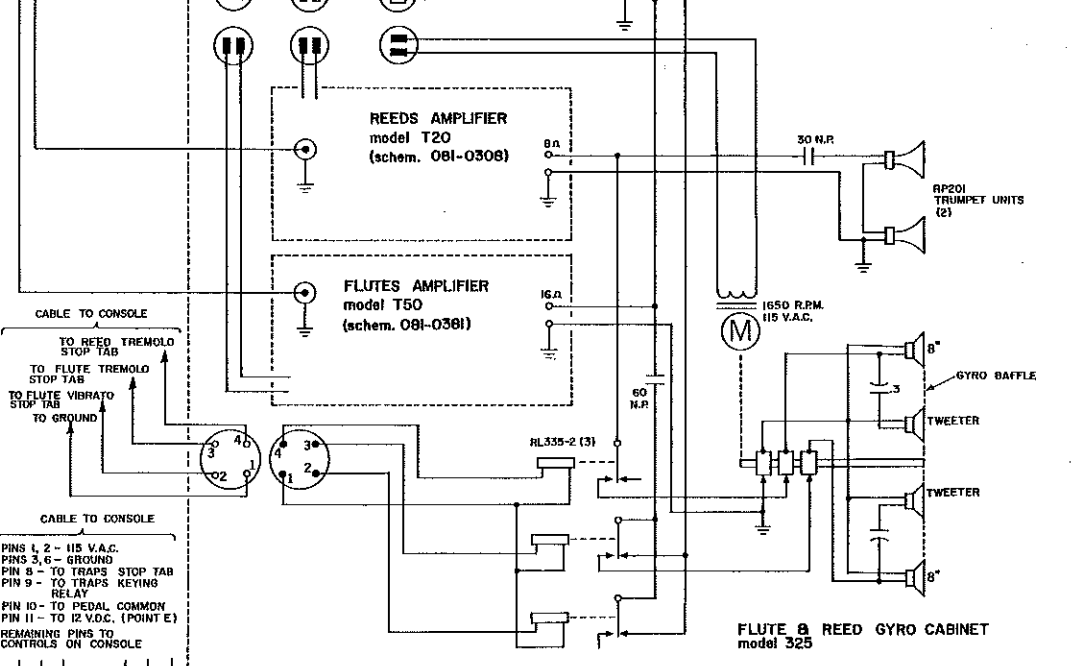
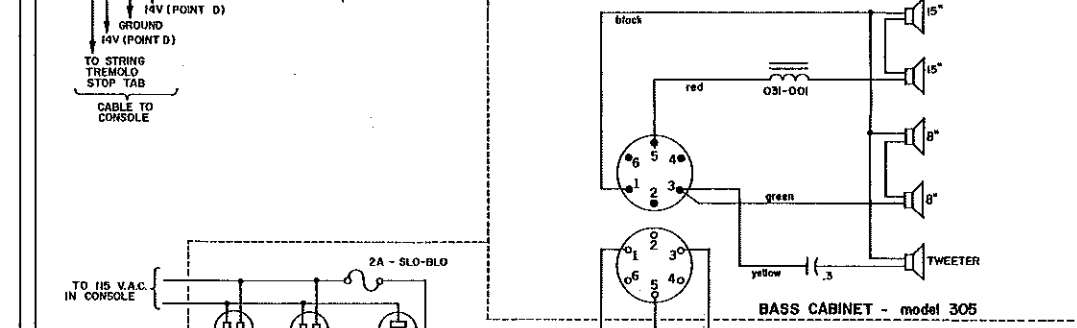
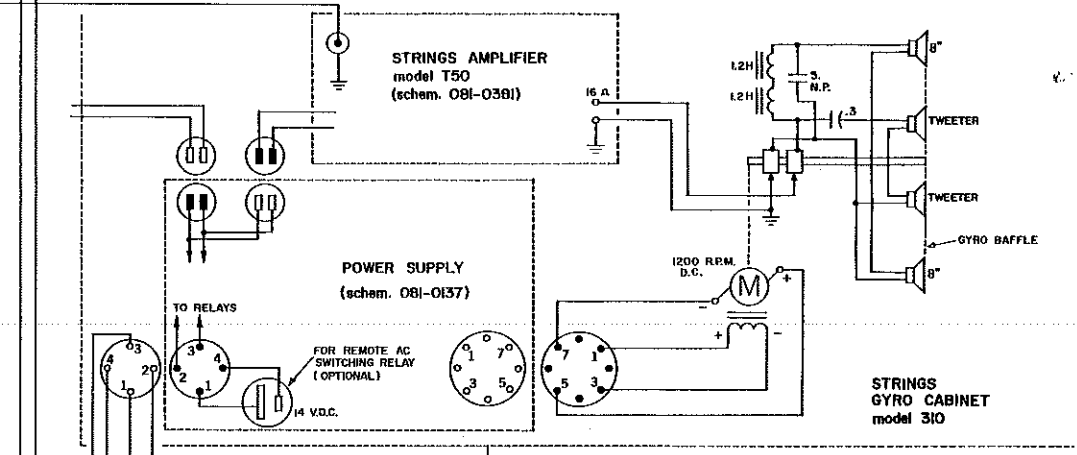
ation, the stop
tronically dis-
ombination can
while pistons
ation can then
ent either can-

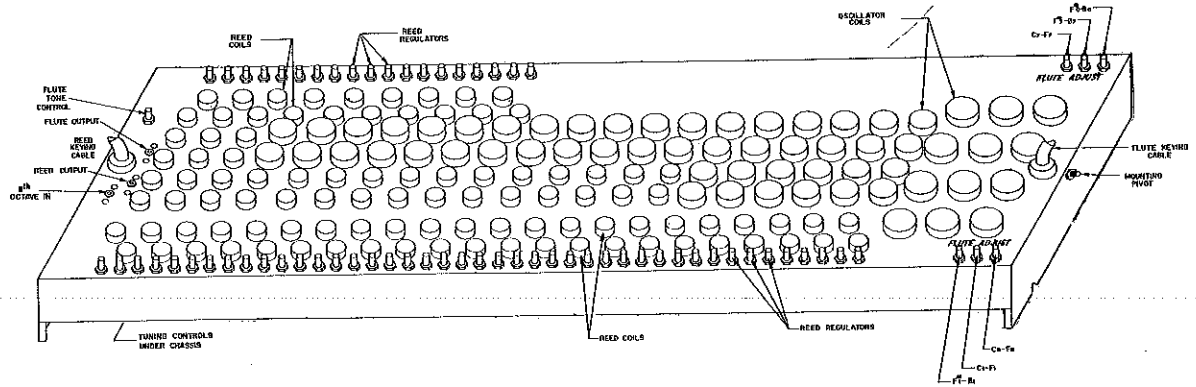




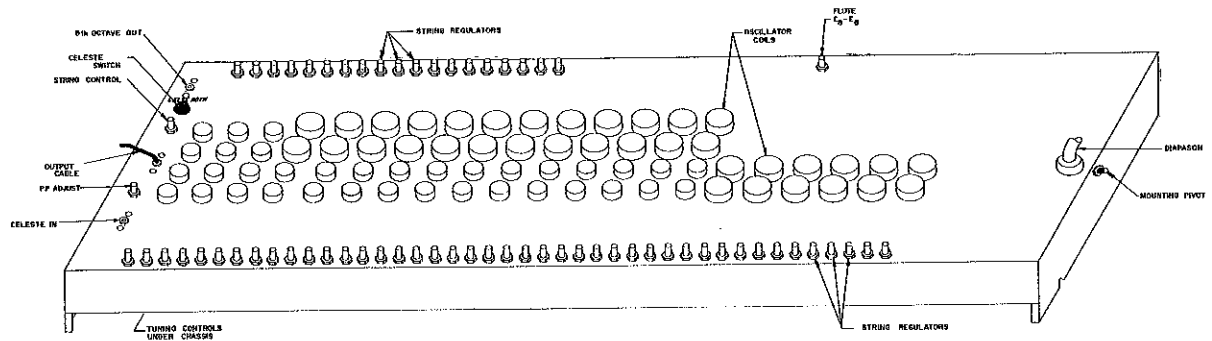
- TO TIBIA BASS LDR ON FLUTE TONE CHANGER
 - TO 16' FLUTE
 - TO 8' STRING
 - TO 8' FLUTE
 - TO 5 1/3' FLUTE
 - TO 4' FLUTE
 - TO 16' FLUTE
 - TO 8' STRING
 - TO 4' STRING
 - TO 4' FLUTE
 - TO 2 2/3' FLUTE
 - TO 2' STRING
 - TO 2' FLUTE
 - TO 1 1/3' FLUTE
 - TO PIN 4 (RELAY) ON POWER SUPPLY
 - TO 2N325 IN SLEIGH BELLS CIRCUIT
 - TO TRAPS UNIT (PIN 8) AND TRAPS KEYING RELAY
 - TO 16' STRING ACTION MAGNETS ON SOLO SLIDE COUPLER
 - TO 16' FLUTE
 - TO TRUMPET LDR
 - TO OBDE LDR
 - TO HORN DIAPHRAM LDR
 - TO 8' STRING
 - TO 8' FLUTE
 - TO 4' STRING
 - TO 4' FLUTE
 - TO 2 2/3' FLUTE
 - TO 2' FLUTE
 - TO 1 3/5' FLUTE
 - TO 1' FLUTE
- ACTION MAGNETS ON PEDAL COUPLER
- ACTION MAGNETS ON ACC. SLIDE COUPLER
- ACTION MAGNETS ON SOLO SLIDE COUPLER
- ON REED TONE CHANGER
- TO 12V KEYING FROM ACC. SLIDE COUPLER (TRAPS SLIDE)
- TO TRAPS STOP TAB
- TO PIN 9 TRAPS UNIT
- TRAPS KEYING RELAY (IN CONSOLE)
- RL335-2

- TO CHIME
 - TO CHIME
 - TO RELAY ON SUSTAIN UNIT
 - TO RELAY ON REPEAT UNIT AND TO SUSTAIN OFF RELAY
 - TO "C" RELAY
 - TO "CC" RELAY
 - TO ACTION MAGNET ON TIBIA COUPLER
 - TO FLUTE SOFTER LDR ON FLUTE TONE CHANGER
 - TO RELAY
 - TO STRINGS P LDR
 - TO STRINGS PP LDR
 - TO FLUTE VIBRATO RELAY (THROUGH PIN 2) IN 325 GYRO CAB.
 - TO FLUTE TREMOLO RELAY (" 3) IN 310 GYRO CABINET
 - TO STRING TREMOLO RELAY (" 3) IN 310 GYRO CABINET
 - TO REED TREMOLO RELAY (THROUGH PIN 4) IN 325 GYRO CABINET
- ACTION MAGNETS ON SOLO SLIDE COUPLER
- ON CHIFF UNIT
- ON STRING TONE CHANGER
- TRAPS CABINET

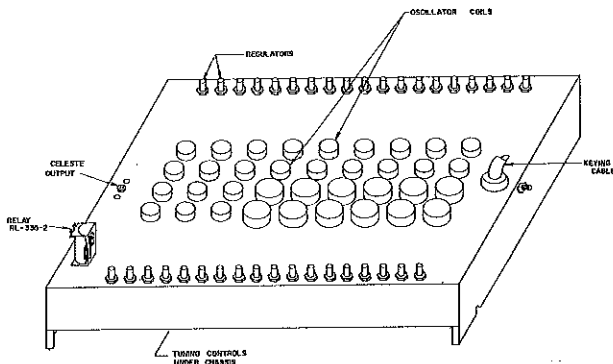




**FLUTE & REED
TONE GENERATOR**



**STRING
TONE GENERATOR**



**CELESTE
TONE GENERATOR**

The Tone Generators are completely serviceable from the back of the organ. All that is necessary for access is to remove the two cotter pins from the slide tracks located at each end of the Tone Generator. The entire Tone Generator will then slide out from the console. By loosening two wing nuts under the front corners, the tone chassis may then be flipped over for servicing and tuning.